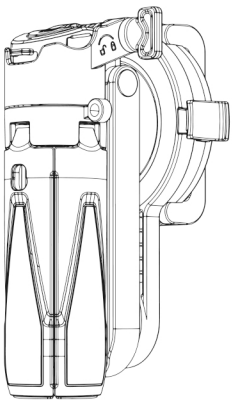


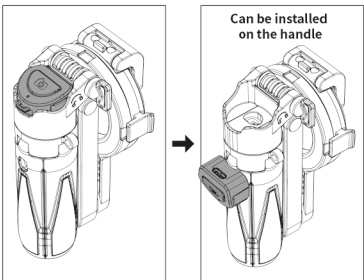
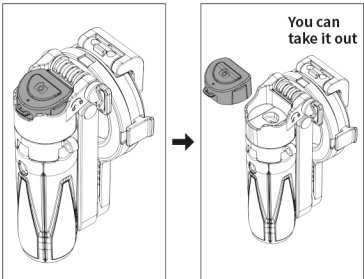
INSTRUCTIONS



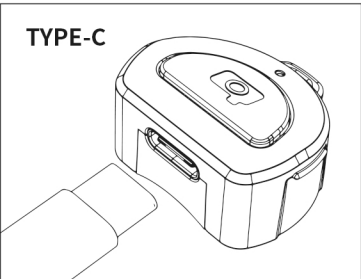
MINI GRIP QUADRIPOD

COMPATIBLE ios Android

Remote Control Instructions



TYPE-C



Remote operation QR code



HOW TO USE

- 1. Startup:** press and hold the camera button for 3 seconds to start the machine, and the indicator flashes to enter the search state.
- 2. Wireless connection:** open the mobile phone Wireless search "vip" and click the connection. After the connection is successful, the indicator light goes out.
- 3. Photographing:** When the remote control is connected to the phone, click the camera button(need to enter the camera app), the indicator light will flash and take a photo.
- 4. Shutdown without connection:** when the remote control is in the state of no connection and no operation it will automatically shut down for about 5 minutes.
- 5. Connected shutdown:** When the remote control is connected to the phone, it will automatically shut down after about 5 minutes of inactivity.
- 6. No connection status:** indicator light flashing
- 7. Shutdown:** long press the photo key for 3 seconds, the indicator Bashes off and shuts down.
- 8. Back connection function:** the remote control has memory connection function. When the mobile phone Wireless is turned on, the remote control will automatically connect the matched mobile phone.

Product parameters

Width of holding mobile phone: 65-93mm  
Supported mobile phone size: 4.7-7 inches

Remote control parameters

Battery model: 401020 polymer  
(rechargeablebattery)  
Charging condition: 5V1  
ABattery capacity: 55mAh  
Charging current: approximately 50mA  
Full charge time: About 30-60 minutes  
Wireless version: 5.2  
Wireless Name: VIP  
Wireless communication: suitable for Wireless version 3.0 and above  
Operating system: iOS/Android universal  
(suitablefor most mobile phones, Android 8.0 or above,ios 4 or above)  
Transmission frequency: 2.4GHz-2.4835GHz  
Communication distance: 10m (32 feet)

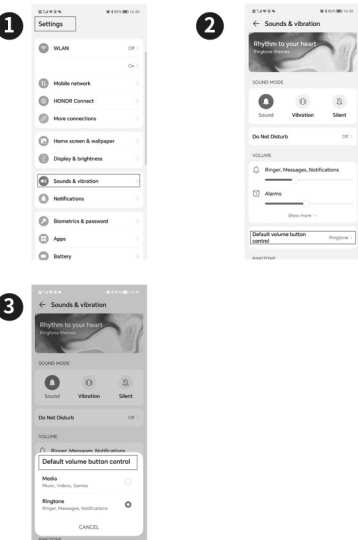
Solution to the case of failure of remote control to connect to mobile phone

1. Turn on the Wireless of the mobile phone and clear some paired Equipment.
2. Turn off and restart the phone.
3. Turn off and restart the Wireless remote control.
4. Turn on the Wireless connection again.
5. Turn on the mobile phone Wireless, turn on the remote control, and search the mobile phone interface .When you get the VIP , click Connect, and the interface displays "connecting" When "connect / pair"!press the remote control button continuously andquickly, that islt can be connected normally
6. Excitationis only required for the prst connectionLive. automatic connection in the future. normal use.

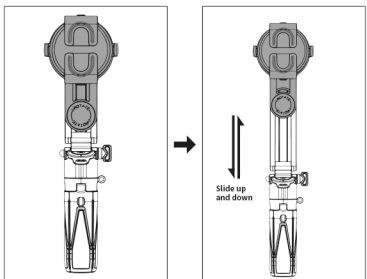
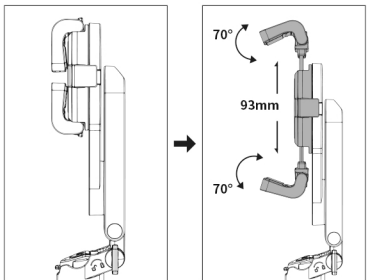
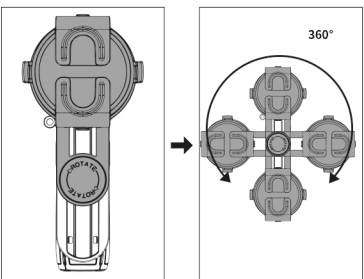
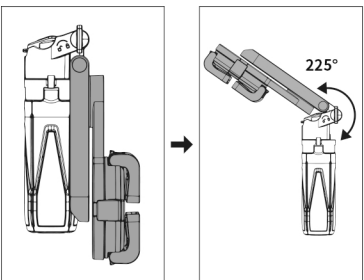
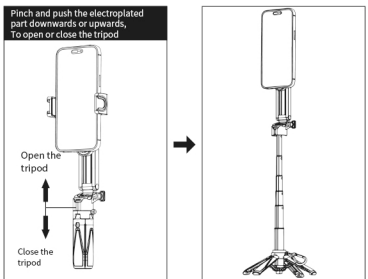
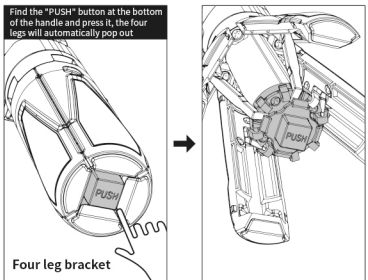
For Android phones, press the remote control to add sound Solution to the problem of quantity /focus adjustment and /or no response.

1. Open the camera to enter the photographing interface.
2. Swipe left or pnd the camera settings
3. Click the volume key function.
4. Set the volume key function to shutter (do notselect zoom or zoom Focus).
5. The setting path of individual mobile camera isdifferent, please pnd it yourself.

Set the volume button of the Hongmeng system phone to the photo button

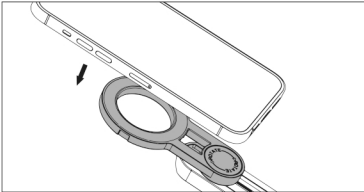


Function Description



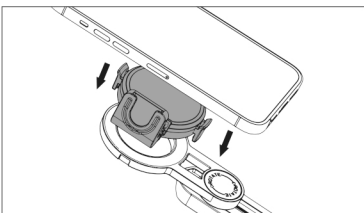
Magnetic suction mode

This bracket is suitable for bare metal use on iphone12 and above phones.  
(Due to the built-in magnetic ring on the back of these phones, wearing a regular case can affect the magnetic force)



Phone clip mode

Without magnetic phone, it can still be used by opening the phone clip



Can be used without a magnetic phone

If your phone is not of the above models, other models or you want to wear a case,you can choose the following two options

1 Using magnetic adapter ring

There is no limit on the model, all mobile phones/shells can be used, and the magnetic sheet is attached On the back of the phone or on the phone case.



Note:  
1.Clean the laminating surface of the magnetic adapter ring, it needs to be laminated on a smooth,flat,and non-porous plane,it is not recommended to tobe laminated on a rough and uneven surface;  
2.Cell phone case made of oily material affect adhesion, such as liquid silicone,not recommended;  
3.The first time you paste, please be sure to paste the correct position,not repeat the paste.After pasting,you need to press it fits perfectly and leave it to be laminated on arough and uneven surface for more than 2 hours.(Do not pull the magnetic adapter ring within 2hours)

Regarding the iOS system remote control not being a photography solution:

1. In non-photography apps, the remote control has a volume function
2. In the photo-taking app, click the "Take Photo" function
3. In the video recording mode of the photo app, click to start recording, and click again to end recording

2 Wearable magnetic suction case

Mobile phone case with magnetic suction ring on the market can be directly adsorbedd.



Set the volume key of the Android phone to the photo button

